

Florida

SMACNA

Inc.

Quarterly Editions – July/September 2013

Volume 50

TECH/SPEC

NEWS

**HANGING SCULPTURE, MULTI DISCIPLINARY COMPLEX
UNIVERSITY OF SOUTH FLORIDA, TAMPA, FL**



**SHEET METAL CONTRACTOR: METALFAB, INC.,
SAN ANTONIO, FL**

HANGING SCULPTURE, MULTI DISCIPLINARY COMPLEX UNIVERSITY OF SOUTH FLORIDA, TAMPA, FL

SHEET METAL CONTRACTOR: METALFAB, INC., SAN ANTONIO, FL

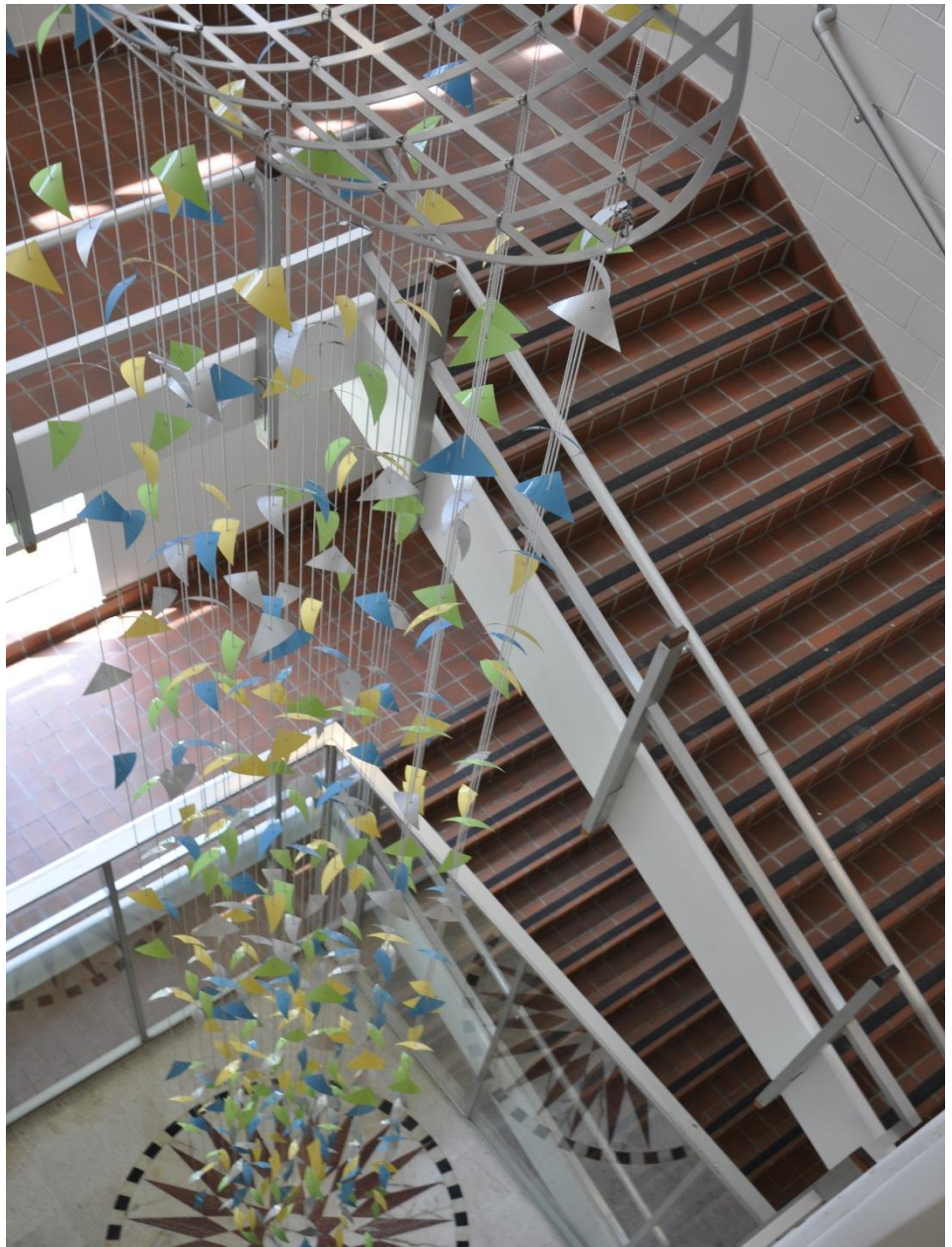
This project, by MetalFab, Inc., consisted of designing and fabricating this striking hanging sculpture that fills the stair well in the Multi Disciplinary Complex, at the University of South Florida in Tampa.

The customer, the staff of the USF, requested a sculpture described as “something along the lines of wings or birds.” The folks at MetalFab then designed this sculpture which is 36 feet in length and has 460 wings or birds in four different colors of green, silver, yellow and blue attached to chains.

The MetalFab craftsmen had to draw the entire sculpture in CAD to get all of the birds spaced evenly and the colors assorted properly. Time was one of the challenges that had to be overcome as the sculpture had to be installed before the start of the new school year and the customer kept making changes to the materials and colors. MetalFab was able to meet the time frame required and the result was striking and gives a visual focus to the stairhall.

Materials used for the sculpture were all stainless steel. The sculpture was hung using steel, angle-mounted to the concrete roof. Turnbuckles were installed in the ceiling with cable to adjust the height of the sculpture. Stainless steel ceiling tiles were affixed to the ceiling of the stairhall which further focuses attention on the sculpture and gives a finished look. Then, a mirror-finish hanging grid was attached and the birds affixed to chains which hang down in the vertical space. The birds were made from aluminum and painted with automotive two-part paint with a clear coat.

The finished sculpture is stunning and exceeded the expectations of both the company and the customer.



HILLEL FAITH CENTER AT NORTHVIEW STUDENT HOUSING BUILDING UNIVERSITY OF CENTRAL FLORIDA, OVIEDO, FL

GENERAL CONTRACTOR: THE DOUGLAS COMPANY, ORLANDO, FL

ARCHITECT: AIP DESIGN, INC., ORLANDO, FL

ENGINEER: BOBES ASSOCIATES CONSULTING ENGINEERS, INC, MAITLAND, FL

SHEET METAL CONTRACTOR: MCDONALD AIR AND SHEET METAL INC., ORLANDO, FL

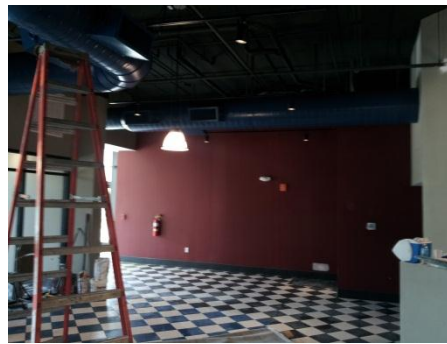
The Hillel Faith Center consists of 19,223 square feet of new construction and is scheduled for completion in September, 2013. Construction is in full swing on the first and second floors of the Northview Student Housing Building at the University of Central Florida, which, when finished, will offer conveniences such as a commercial kitchen, café and dining area, theater, group meeting room, offices and conference rooms. Also included in the project scope are a game lounge, seating, lounge, snack room, break room and new restrooms.



Intake and exhaust for the kitchen hood



The exposed spiral ductwork on the first floor



The HVAC portion of the project, performed by McDonald Air and Sheet Metal, Inc. consisted of the fabrication and installation of 8,000 square feet of fiberglass duct, exposed spiral and metal exhaust duct, grease exhaust, and 12 split air conditioning systems.

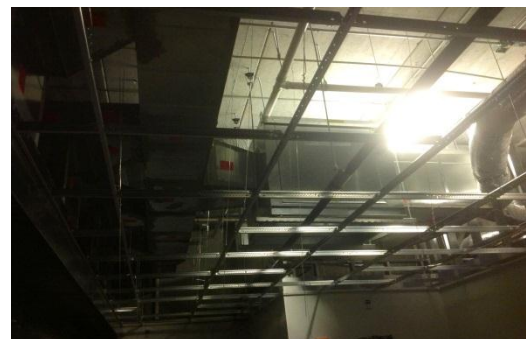
5,000 hours in the shop and field were required to complete the project.

The Hillel facility will have a modern, “Google-inspired” theme and is designed to house creativity, social action, student leadership development and help bring Jewish activities to the community. Student activities will include interest in politics, campus government, the environment, issues for children, pollution, Israel and international affairs.

Ralph Carver, President of McDonald Air and Sheet Metal, Inc. gave special thanks and recognition to the Douglas Company’s Project Managers, Matt Higgins and Jonathan Wilkes, and Superintendent, Kevin Spicer. He also recognized McDonald Air and Sheet Metal’s Project Manager, Mike Hess and Job Superintendent, Donnell Williams.



Multiple condensing units on the roof



Intake fan above the ceiling and in front of the hood

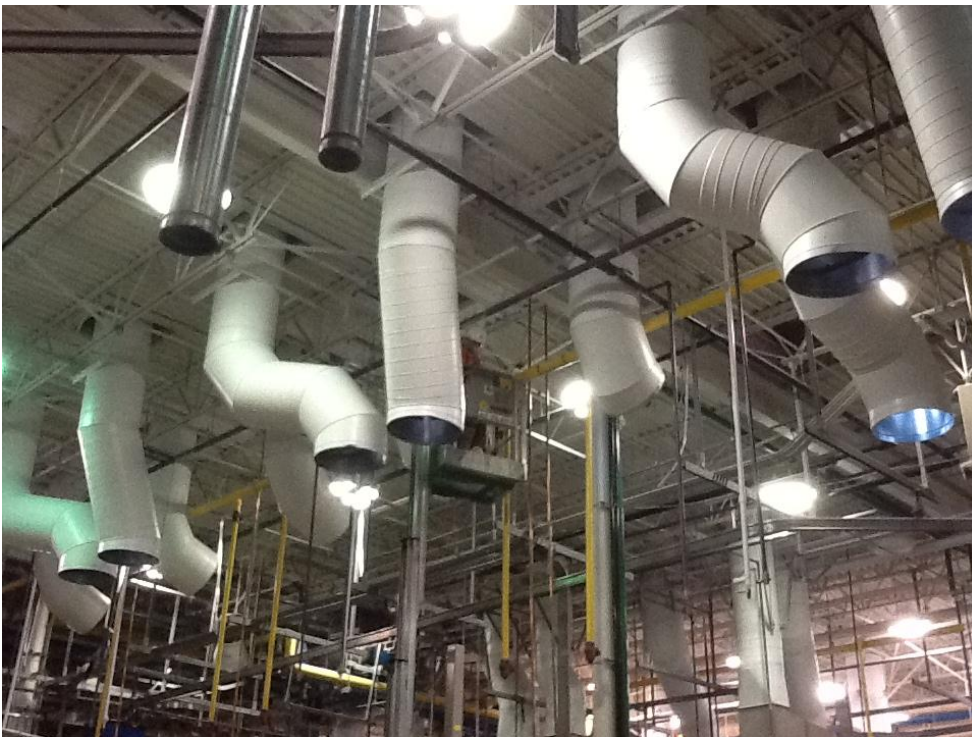
**DISNEY TEXTILE SERVICES TUNNEL WASHER #4,
DISNEY WORLD, LAKE BUENA VISTA, FL**

ENGINEER: PENINSULA ENGINEERING, INC., ORLANDO, FL

SHEET METAL CONTRACTOR: LAPIN SHEET METAL COMPANY, INC., ORLANDO, FL

Lapin Sheet Metal Company, Inc., continues to work for Disney Textile Services on Tunnel Washer #4.

The project consisted of adding a new washer and dryer for Isle 4 at Disney Textile Services. Work included ductwork for seven intakes, seven exhaust stacks, and two lint collector stacks.



As with their previous work for Disney Textile Services, Lapin had to coordinate ductwork to miss laundry bags and rails so as not to hinder peak operation time at Textile Services.



STATUS/SCHEDULE OF SMACNA TECHNICAL MANUALS

At the recent SMACNA Council of Chapter Representatives Meeting in Chicago, Allison Fee, Project Manager, reported on ongoing SMACNA technical projects.

HVAC Systems

Commissioning Manual

- Maintains three levels of Commissioning:
 - Level 1 – Basic Commissioning
 - Level 2 – Comprehensive Commissioning
 - Level 3 – Critical Systems Commissioning
- “Retro” and “recommissioning” will be removed (Commissioning is an ongoing process.)
- LEED requirements are referenced in the manual.
- The ANSI process is being finalized with ANSI Accreditation expected in June 2013.

Sound and Vibration Procedural Guide

- Technician guidance for field applications.
- Release is scheduled for summer 2013.

Round Industrial Duct Construction Standards

- Main revision is the incorporation of temperature reduction factors for carbon steel.
- Aluminized steel was added.
- Flange connections updated.
- Aluminum Table-gage references updated to identify sheet thickness by its nominal decimal equivalent.
- Currently pursuing ANSI Accreditation.
- Scheduled for release 4th quarter 2013.

Total Systems Air Leakage Test Manual

- Need for SYSTEMS AIR LEAKAGE TEST – because of greater focus on commissioning and “whole building performance”.
- Provides a “Method of Tests”.
- Establishes acceptable leakage criteria.
- The manual is jointly sponsored by ASHRAE.
- Will pursue ANSI Accreditation.
- A task force is working on it which is comprised of SMACNA, ASHRAE and AHRI members.
- A draft for task force review was due in late May.

Residential Comfort Systems

- Revising in recognition of all the new building code requirements.
- Installation standards for residential heating and cooling systems.
- Includes hydronic and radiant systems.
- Service criteria.
- Will pursue ANSI Accreditation.
- Public review will commence in Fall 2013.

Energy Systems Analysis and Management

- General update from the 1997 1st Edition.
- Update to newer technologies.
- Retrofits enhancements for existing buildings.
- Includes Energy Auditing and Assessment.
- Non-ANSI document.
- Public review will commence in late Fall 2013.

HVAC Duct Construction Standards

- Task force has been formed and will meet in Summer 2013 to develop the scope for the next edition.
- Current ANSI document.

FLORIDA SMACNA, INC. MEMBER FIRMS

In the sheet metal and air conditioning business, nobody knows excellence quite the way SMACNA Contractors do. After all, they wrote the book on it. Why take a chance on doing business with anyone who offers less.

All Southern Fabricators, Inc.

5010 126th Avenue N.
Clearwater, FL 33760
727-573-4846
Manuel Santana, Jr.

Bohnert Sheet

Metal 2225 NW
76th Street Miami,
FL 33147
305-696-6851
William H. Marvel, Jr. (Skip)

BSA Sheet Metal

2530 Ali Baba Avenue
Opa Locka, FL 33054
305-681-3771
John Rudisill

CADVANTAGE Drafting Service Inc.

2220 1st Avenue S.
St. Petersburg, FL 33712
727-321-2072
Dan Sinclair

Dodec Inc.

3140 W. 84th Street, Bay #2
Hialeah, FL 33018
305-826-4022
Trevor Pantry

Ferber Sheet Metal Works, Inc.

4121 Evergreen Avenue
Jacksonville, FL 32206
904-356-3042
George Ferber

Lapin Sheet Metal Company

3825 Gardenia Avenue
Orlando, FL 32839
407-423-9897
Daniel J. Lapin

McDonald Air and Sheet Metal, Inc.

2730 Eunice Avenue
Orlando, FL 32808
407-295-0220
Ralph Carver

Magnum Sheet Metal, Inc.

7470 NW 68th Street
Miami, FL 33166
305-885-5656
William H. Murphy, Sr.

MetalFab, Inc.

P. O. Box 1184
San Antonio, FL 33576-1184
352-588-9901
Wally Ruda

Moffitt Mechanical, LLC

1351 13th Avenue South, Suite
130
Jacksonville Beach, FL 32250
904-241-9944
John Moffitt

Omega Test and Balance

126 Wisteria Avenue
Fort Pierce, FL 34982
772-216-7632
Hugh Grimes

R. Neth & Son, Inc.

360 E. Landstreet Road
Orlando, FL 32824
407-855-9096
Brad Supples

Ray's Metal Works, Inc.

P.O. Box 700
Alachua, FL 32616
386-462-1415
Ray Burnsed, Sr.

Sheet Metal Experts, Inc.

8986 N.W. 105th Way
Medley, FL 33178
305-805-2019
William F. Medlin

South Florida Sheet Metal

5264 NW 163rd St.
Miami, FL 33014
305-430-0075
Harold Woods

United Sheet Metal Company/ Applegate

1141 NW 31st Avenue
Pompano Beach, FL 33069
954-773-2910
Rich Applegate

Vickers Metal Works, Inc.

6701 Edgewater Commerce
Pkwy.
Orlando, FL 32810
407-297-7546
Tim Vickers

OTHER CONTRIBUTORS TO THE FLORIDA SHEET METAL INDUSTRY

Colbert Air Conditioning
Crown Corr Erection
D&J Sheet Metal
FCR Mechanical Contractors

Irvine Mechanical
MFH Sheet Metal Fabricators,
Corp.
SDB Engineers and Constructors,
Inc.
Quality Metal Works, Inc.

System Tech Services
Tabco, LLC
TankServe, Inc.
Triple M Roofing Corp.
Veritab Environmental

skarr@flsmacna.org

Florida SMACNA, Inc. is a trade association made up of qualified sheet metal and air conditioning contracting firms dedicated to improving the quality of the construction business in Florida. The Association is part of a nationwide network of chapters that represent the leading voice in the industry, the Sheet Metal and Air Conditioning Contractors' National Association (SMACNA) located in Chantilly, Virginia.

Florida

SMACNA

Inc.

SMACNA'S CONSTRUCTION STANDARDS

- Accepted Industry Practices for Sheet Metal Lagging.
- Architectural Sheet Metal Inspection Guide.
- Architectural Sheet Metal Manual, 6th edition 2003
- Fire Smoke and Radiation Damper Installation Guide for HVAC Systems.
- Guide for Steel Stack Construction.
- Guidelines for Roof Mounted Outdoor Air-Conditioner Installations.
- HVAC Duct Systems Inspection Guide.
- Kitchen Ventilation Systems & Food Service Equipment Fabrication & Installation Guidelines.
- Residential Sheet Metal Guidelines.
- Seismic Restraint Manual: Guidelines for Mechanical Systems.
- Sheet Metal Welding Guide.
- Standard Practice in Sheet Metal Work.

SMACNA'S DESIGN GUIDES

- Duct System Calculator - Imperial + Metric
- Ducted Electric Heat Guide for Air Handling Systems.
- Guidelines for Change Orders
- HVAC Systems - Duct Designs.

SMACNA'S DUCT STANDARDS

- Accepted Industry Practice for Industrial Duct Construction.
- Fibrous Glass Duct Construction Standards.
- HVAC Air Duct Leakage Test Manual.
- HVAC Duct Construction Standards - Metal and Flexible.
- Rectangular Industrial Duct Construction Standards.
- Residential Comfort System Installation Standards Manual.
- Round Industrial Duct Construction Standards.
- Round Industrial Duct Construction Standards (RIDCS) Software Version 2.0.

- Thermoplastic Duct (PVC) Construction Manual.
- Thermoset FRP Duct Construction Manual.

SMACNA'S ENVIRONMENTAL PUBLICATIONS

- Building Systems Analysis and Retrofit Manual.
- Energy Systems Analysis and Management.
- HVAC Sound & Vibration Manual
- HVAC Systems - Applications.
- HVAC Systems - Commissioning Manual.
- HVAC Systems - Testing, Adjusting & Balancing.
- IAQ Guidelines for Occupied Buildings Under Construction.
- Indoor Air Quality - A Systems Approach.
- TAB Procedural Guide.

Florida

SMACNA Inc.

6767 N. Wickham Road, Suite 400
Melbourne, Florida 32940

RETURN SERVICE REQUESTED



Florida SMACNA, Inc.

6767 N. Wickham Rd. #400

Melbourne, FL 32940

Tel: 321-242-8223 Fax: 321-242-8277

skarr@flsmacna.org

Susan E. Karr

Executive Vice President

<http://www.flsmacna.org>