

Florida

# SMACNA Inc.

Quarterly Edition - January 2012

Volume 44

## TECH/SPEC NEWS

ARMANI EXCHANGE STORE  
PALM BEACH GARDENS MALL: PALM BEACH GARDENS, FL



SHEET METAL CONTRACTOR: METALFAB, INC., SAN ANTONIO, FL

---

**ARMANI EXCHANGE STORE  
PALM BEACH GARDENS MALL: PALM BEACH GARDENS, FL**



**Sheet Metal Contractor:** Metalfab, Inc., San Antonio, FL

This project, in the Palm Beach Gardens Mall, in Palm Beach Gardens, Florida consisted of cladding the entire Armani Exchange storefront with 1/8 inch high polished mirror finish stainless steel.

Metalfab, Inc. was contacted by Armani, after they had difficulties finding a contractor competent to perform the job.

Metalfab, Inc. had to devise methods of making the bends that the Armani store called for in their specs. The brake work on this project was challenging. The folks at Metalfab came up with their own methods and special dies to complete the job.

Metalfab and the glass company had to work closely with each other

---

**ARMANI EXCHANGE STORE  
PALM BEACH GARDENS MALL: PALM BEACH GARDENS, FL**

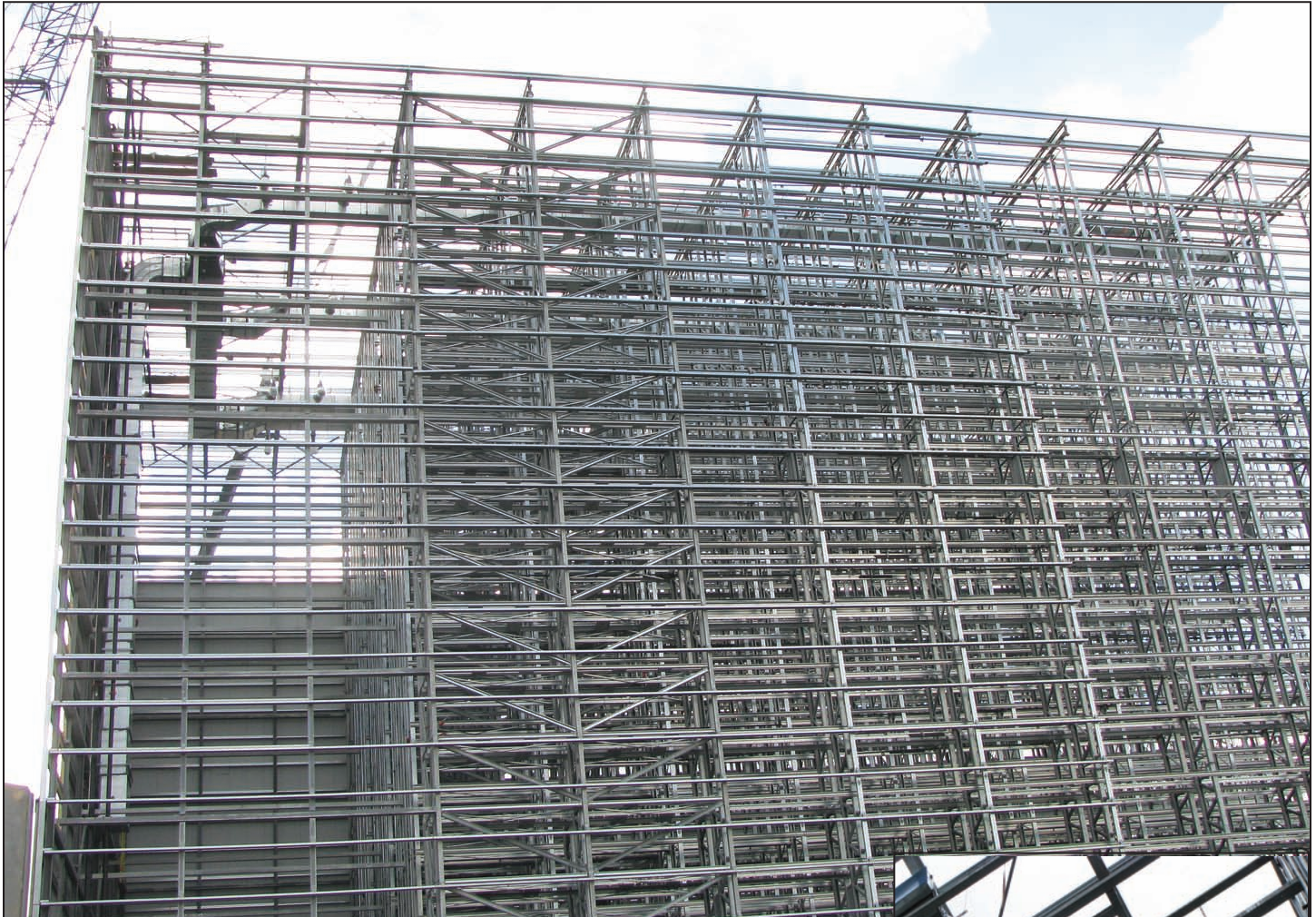


because the stainless worked into their aluminum glass framing as the installation proceeded.

Armani Exchange was very pleased with the work done by Metalfab. Since the installation of the project in Palm Beach Gardens, Armani engaged Metalfab, Inc. to do another store for them at the International Mall in Tampa, Florida.



**NEPHRON PHARMACEUTICALS CORPORATION,  
ORLANDO, FL**



**Mechanical Engineer:** Affiliated Engineers, Orlando, FL  
**General Contractor:** J. Raymond Construction, Orlando, FL  
**Steel Erector:** Schaefer Systems International, Inc., Charlotte, NC  
**Mechanical Contractor:** W. W. Gay, Orlando, FL  
**Sheet Metal Contractor:** Lapin Sheet Metal Company, Inc., Orlando, FL

The scope of the project, performed by Lapin Sheet Metal Company, Orlando, Florida consisted of fabrication and installation of 2289 lineal feet of HVAC galvanized sheet metal ductwork into the Nephron Pharmaceuticals Corporation building in Orlando.

The Nephron building is a large warehouse used for the storage of medical respiratory medications

which are shipped throughout the country to hospitals and pharmacies.

The most unusual challenge presented by the construction of the building was sequencing of the work. The structure was erected from the inside out. The steel for palletizing racks was installed first along with their automated cranes.

Lapin had to devise a method to simultaneously hoist its ductwork 100 feet to the top of the racks while steel erection was going on. The ductwork was installed in both low bay and high bay areas of the building.

---

**NEPHRON PHARMACEUTICALS CORPORATION,  
ORLANDO, FL**



With close coordination and working together with J. Raymond, the General Contractor, and Schaefer Systems International, Inc., the steel erectors, Lapin flew its ductwork up with the steel.

After racks and cranes had been installed, the outside enclosure could be placed on the building for drying in.

Another challenge of the project was a three month start to finish

schedule. The motto of the project became “do whatever it takes to get your work done” in order to meet schedule.

Due to the height of the work and stacking of the trades to meet schedule, safety played a major role in the project which experienced no major accidents.

The building was completed on December 31, 2011.

Lapin Sheet Metal thanks J. Raymond, the General Contractor, W. W. Gay Mechanical, Orlando and all contractors involved for making it a safe and successful project.

The company also recognized its key personnel: Ron Irby, Superintendent, Jaime Soto, Foreman, and those employees responsible for fabricating and installing the ductwork to bring the project to fruition.

## FLORIDA SMACNA, INC. MEMBER FIRMS

In the sheet metal and air conditioning business, nobody knows excellence quite the way SMACNA Contractors do. After all, they wrote the book on it. Why take a chance on doing business with anyone who offers less.

### All Southern Fabricators, Inc.

5010 126th Avenue N.  
Clearwater, FL 33760  
727-573-4846  
Manuel Santana, Jr.

### Lapin Sheet Metal Company

3825 Gardenia Avenue  
Orlando, FL 32839  
407-423-9897  
Ronald J. Lapin

### R. Neth & Son, Inc.

360 E. Landstreet Road  
Orlando, FL 32824  
407-855-9096  
Brad Supples

### Bohnert Sheet Metal

2225 NW 76th Street  
Miami, FL 33147  
305-696-6851  
William H. Marvel, Jr. (Skip)

### McDonald Air and Sheet Metal, Inc.

2730 Eunice Avenue  
Orlando, FL 32808  
407-295-0220  
Ralph Carver

### Ray's Metal Works, Inc.

P.O. Box 700  
Alachua, FL 32616  
386-462-1415  
Ray Burnsed, Sr.

### BSA Sheet Metal

2530 Ali Baba Avenue  
Opa Locka, FL 33054  
305-681-3771  
John Rudisill

### Magnum Sheet Metal, Inc.

7470 NW 68th Street  
Miami, FL 33166  
305-885-5656  
William H. Murphy, Sr.

### Sheet Metal Experts, Inc.

8986 N.W. 105th Way  
Medley, FL 33178  
305-805-2019  
William F. Medlin

### CADVANTAGE Drafting Service, Inc.

2220 1st Avenue S.  
St. Petersburg, FL 33712  
727-321-2072  
Dan Sinclair

### MetalFab, Inc.

P. O. Box 1184  
San Antonio, FL 33576-1184  
352-588-9901  
Wally Ruda

### South Florida Sheet Metal

5264 NW 163rd St.  
Miami, FL 33014  
305-430-0075  
Harold Woods

### Dodec Inc.

3140 W. 84th Street, Bay #2  
Hialeah, FL 33018  
305-826-4022  
Trevor Pantry

### Moffitt Mechanical, LLC

1351 13th Avenue South, Suite 130  
Jacksonville Beach, FL 32250  
904-241-9944  
John Moffitt

### United Sheet Metal Company/ Applegate

1141 NW 31st Avenue  
Pompano Beach, FL 33069  
954-773-2910  
Rich Applegate

### Ferber Sheet Metal Works, Inc.

4121 Evergreen Avenue  
Jacksonville, FL 32206  
904-356-3042  
George Ferber

### Omega Test and Balance

126 Wisteria Avenue  
Fort Pierce, FL 34982  
772-216-7632  
Hugh Grimes

### Vickers Metal Works, Inc.

6701 Edgewater Commerce Pkwy.  
Orlando, FL 32810  
407-297-7546  
Tim Vickers

## OTHER CONTRIBUTORS TO THE FLORIDA SHEET METAL INDUSTRY

Colbert Air Conditioning  
Crown Corr Erection  
D&J Sheet Metal  
Hanan Mechanical  
FCR Mechanical Contractors

Irvine Mechanical  
MFH Sheet Metal Fabricators, Corp.  
SDB Engineers and Constructors, Inc.  
Southeast Duct Specialists  
Quality Metal Works, Inc.

System Tech Services  
Tabco, LLC  
TankServe, Inc.  
Triple M Roofing Corp.  
Veritab Environmental

## SMACNA TECHNICAL RESOURCES BULLETIN: TECHNICAL PAPER ON HVAC AIR DUCT LEAKAGE

SMACNA published the HVAC Air Duct Leakage Test Manual in conjunction with the SMACNA HVAC Duct Construction Standards.

Research proved that duct leakage could be well defined as a function of the static pressure and the surface area of the duct. This allowed for the introduction of leakage classes that could be used to calculate and accurately represent the leakage of air from ducts of various sizes and

configurations.

For over three decades SMACNA has provided both a method of test and pass/fail criteria for air duct leakage.

All of the following industry standards and codes follow the SMACNA method of duct air leakage testing in the same basic fashion, varying only slightly with respect to the pass/fail criteria, and

other minor variances for these tests.

**ASHRAE 90.1 2010**  
**The International Energy Conservation Code 2012**

**The International Green Construction Code V2**

**IAPMO's Green Plumbing and Mechanical Code Supplement (2010)**

To see the entire Bulletin of December 13, 2011, go to [www.smacna.org](http://www.smacna.org) and click on Technical Resources.

# Florida

# SMACNA

# Inc.

### SMACNA'S CONSTRUCTION STANDARDS

- Accepted Industry Practices for Sheet Metal Lagging.
- Architectural Sheet Metal Inspection Guide.
- Architectural Sheet Metal Manual, 6th edition 2003
- Fire Smoke and Radiation Damper Installation Guide for HVAC Systems.
- Guide for Steel Stack Construction.
- Guidelines for Roof Mounted Outdoor Air-Conditioner Installations.
- HVAC Duct Systems Inspection Guide.
- Kitchen Ventilation Systems & Food Service Equipment Fabrication & Installation Guidelines.
- Residential Sheet Metal Guidelines.
- Seismic Restraint Manual: Guidelines for Mechanical Systems.
- Sheet Metal Welding Guide.

- Standard Practice in Sheet Metal Work.

### SMACNA'S DESIGN GUIDES

- Duct System Calculator - Imperial + Metric
- Ducted Electric Heat Guide for Air Handling Systems.
- Guidelines for Change Orders
- HVAC Systems - Duct Designs.

### SMACNA'S DUCT STANDARDS

- Accepted Industry Practice for Industrial Duct Construction.
- Fibrous Glass Duct Construction Standards.
- HVAC Air Duct Leakage Test Manual.
- HVAC Duct Construction Standards - Metal and Flexible.
- Rectangular Industrial Duct Construction Standards.
- Residential Comfort System Installation Standards Manual.
- Round Industrial Duct Construction Standards.

- Round Industrial Duct Construction Standards (RIDCS) Software Version 2.0.
- Thermoplastic Duct (PVC) Construction Manual.
- Thermoset FRP Duct Construction Manual.

### SMACNA'S ENVIRONMENTAL PUBLICATIONS

- Building Systems Analysis and Retrofit Manual.
- Energy Systems Analysis and Management.
- HVAC Sound & Vibration Manual
- HVAC Systems - Applications.
- HVAC Systems - Commissioning Manual.
- HVAC Systems - Testing, Adjusting & Balancing.
- IAQ Guidelines for Occupied Buildings Under Construction.
- Indoor Air Quality - A Systems Approach.
- TAB Procedural Guide.

**Florida**

# **SMACNA** Inc.

6767 N. Wickham Road, Suite 400  
Melbourne, Florida 32940

RETURN SERVICE REQUESTED



**Florida SMACNA, Inc.**

**6767 N. Wickham Rd. #400**

**Melbourne, FL 32940**

**Tel: 321-242-8223 Fax: 321-242-8277**

**skarr@flsmacna.org**

**Susan E. Karr**

**Executive Vice President**

**<http://www.flsmacna.org>**