

Florida

SMACNA Inc.

Quarterly Edition - April, 2006

Volume 21

TECH / SPEC NEWS

COUNTRYWIDE HOME LOANS: THE IMAGING AND DOCUMENT STORAGE BUILDINGS, TAMPA, FL



Supply duct from AHU-1A and AHU-1B joined together serving a portion of Building 6.

Sheet Metal Contractor: McDonald Air & Sheet Metal, Inc., Orlando, FL

COUNTRYWIDE HOME LOANS: THE IMAGING AND DOCUMENT STORAGE BUILDINGS, TAMPA, FL



Supply duct and branches serving office space. Basic bottom of duct at 14' suspended below 23' joists. Some material is on the floor being prepared for installation.

Architects: HKS Architects, Inc., Tampa, FL
Horton Harley and Carter, Tampa, FL

Engineer: Colwill Engineering, Tampa, FL

General Contractor: Manhattan Construction, Tampa, FL; Atlanta, GA; Tulsa, OK
Project Manager: Jim Brindle
Superintendent: Herb Way

Mechanical Contractor: John J. Kirlin, Tampa, FL
Mechanical Project Manager: Rick Montz

Sheet Metal Contractor: McDonald Air & Sheet Metal, Inc., Orlando, FL
Project Manager: Bob Williamson
Job Site Foreman: Richard Daniel

Countrywide Home Loans Company purchased two building shells which were constructed some months earlier by another general contractor in Tampa, Florida. The buildings, totaling 231,000 square-feet were built on one level of tilt wall and barjoists.

Countrywide brought in its own design

team to construct the interior of the buildings' shells. This build-out of the interior of the building was a fast-track project and was compressed into a four month completion schedule.

McDonald Air & Sheet Metal, Inc. partnered with Cadvantage Drafting Service, Inc. of St. Petersburg who produced, with

unbelievable speed, accurate shop drawings. The project was completed in 20 weeks working only five days per week even though significant changes were made to the duct work after drawings were complete. The dedicated craftsmen at McDonald's spent approximately 15,000 man hours on the project.

COUNTRYWIDE HOME LOANS: THE IMAGING AND DOCUMENT STORAGE BUILDINGS, TAMPA, FL



Completed supply and return ducts waiting for ceiling grid. Branch ducts are terminated approximately 3' above the finished ceiling for easy access through the grid system to connect flex duct and install diffusers without damaging the grid.

The \$1,500,000 project required 199,000 lbs. of duct work; 178,000 lbs. of rectangular duct; 21,000 lbs. of round duct; 150 lbs. of stainless steel duct; and included six York air handling units and thirty-three Greenheck exhaust fans.

Manhattan Construction Project Superintendents, Herb Way and Scott Heddens were impressed with the way the McDonald team performed and worked with the general contractor in completing the Countrywide project. They said, "Bob

Williamson and Richard Daniel are two of the best HVAC men I've ever worked with in my forty-plus years of running construction projects. Thanks again for a job well done and especially well managed by our team. They deserve to be recognized!"

FLORIDA SMACNA TO SPONSOR SEMINAR FOR CONTINUING EDUCATION CREDITS FOR CONTRACTORS

"THE TOP TEN WAYS TO PREVENT MAJOR SCREW-UPS IN CONSTRUCTION PROJECTS" JULY 20, 2006

This highly-regarded program is presented in a panel discussion format. A panel representing the perspective of architects/engineers, general contractors/construction managers, sub-contractors and the legal profession will discuss the top ten ways to avoid major problems in construction projects.

Addressed are critical issues such as: documentation, unexpressed assumptions, budget, drawings and specs, and other

"usual suspect" areas that often create havoc on construction projects.

Serving as moderator is Jack Morrell, Consultant, Morell Consulting Services, Inc. The panel will consist of an architect/engineer, a general contractor, a sheet metal contractor and an attorney.

The program will be held at the Doubletree Hotel Orlando, 5780 Major Boulevard, Orlando, Florida.

Florida SMACNA is a provider of continuing education for the Construction Industry Licensing Board and attendees will receive seven hours CEU credit.

On July 21, additional courses will be offered to provide for the full 14 hours of CEU credits required.

Florida SMACNA's provider number is 0006797 and the course number is 0002105. For further information, call the Association at (321) 242-8223

**PEPIN HEART HOSPITAL AND RESEARCH INSTITUTE,
TAMPA, FL**



General Contractor: Batson-Cook Company, Tampa, FL
Architect: RBK Tampa Architects, Tampa, FL
Engineer: BGA, Inc., Tampa, FL
Mechanical Contractor: Harper-Limbach, Orlando, FL
Sheet Metal Contractor: Lapin Sheet Metal Co., Inc., Orlando, FL
Drafting/Coordination: Cadvantage Drafting Service, Inc., St. Petersburg, FL

The scope of the Pepin Heart Hospital and Research Institute project for Orlando based, Lapin Sheet Metal Company, Inc. included providing the fabrication and installation of the HVAC duct system for the new three-story, 127,000 square-foot Research Institute addition and modifica-

tions to the existing Pepin Heart Hospital's boiler and flue pipe system.

Challenges were faced in both the new facility and in the existing hospital.

In the new Research Institute the Lapin

team encountered several obstacles to overcome, such as MEP coordination, the routing of duct work around structural steel in the operating rooms and the installation of a giant generator louver.

The biggest hurdle they overcame was

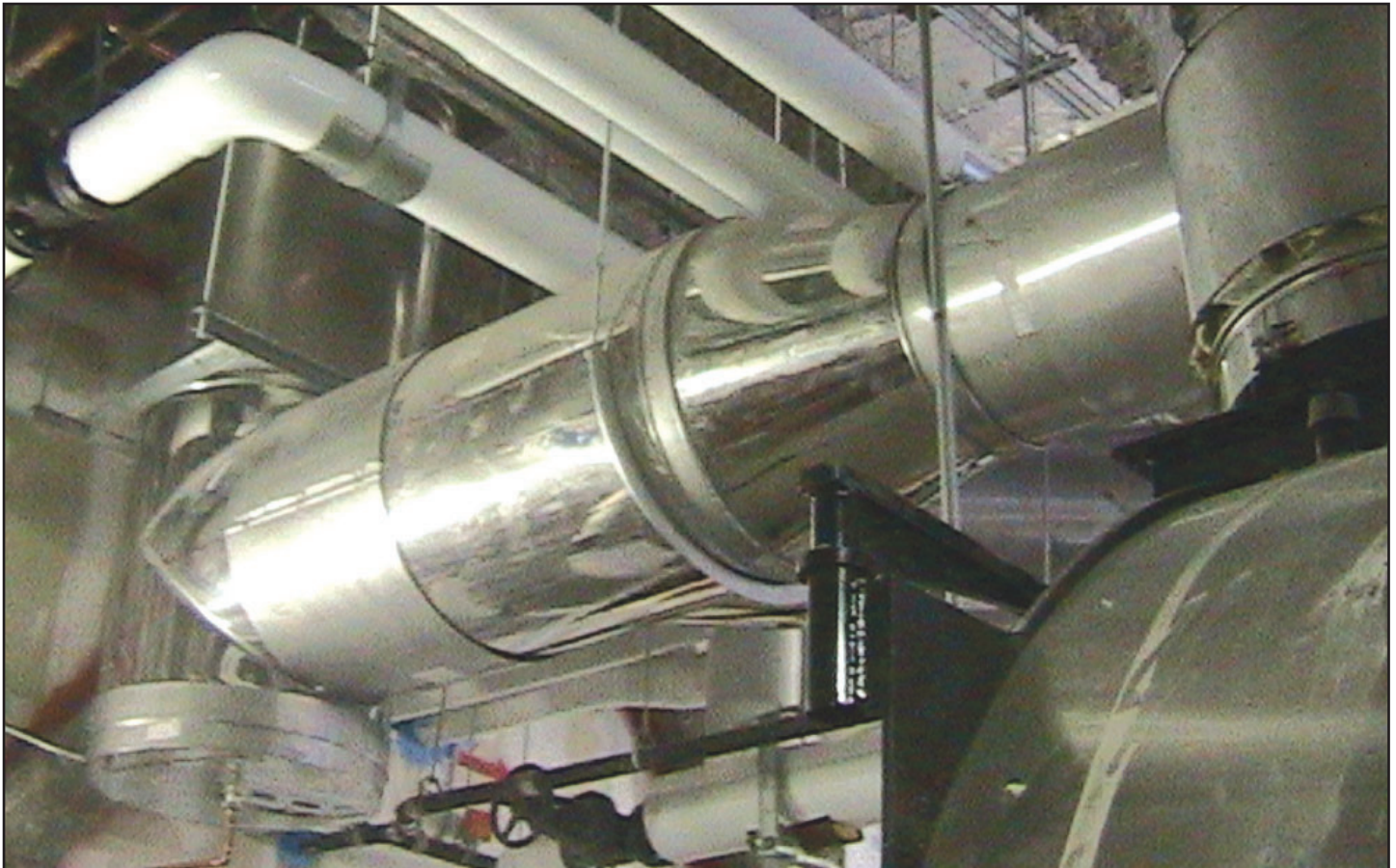
PEPIN HEART HOSPITAL AND RESEARCH INSTITUTE, TAMPA, FL

the installation of NOA Hurricane louvers in a glass curtain wall system.

The original hospital building presented the challenge of installing a 16 gauge welded stainless steel pipe which had to be inserted into the existing concrete flue pipe which runs five stories high.

The project was completed on March 23, 2006.

Ron Lapin, President of Lapin Sheet Metal Company, Inc. expressed his sincere gratitude to Batson-Cook Company for their expertise and excellent management of the project and his thanks to Harper-Limbach for the completion of another successful mechanical project. He also thanks fellow SMACNA contractor, Dan Sinclair, Cadvantage Drafting Service, Inc., for providing drafting and coordination services for the HVAC system. He further cited Ronald Irby, Bill Simms and all Lapin Sheet Metal employees involved for an excellent job which contributed to the success of the project.



FLORIDA SMACNA, INC. MEMBER FIRMS

In the sheet metal and air conditioning business, nobody knows excellence quite the way SMACNA Contractors do. After all, they wrote the book on it. Why take a chance on doing business with anyone who offers less.

All Southern Fabricators, Inc.
5010 126th Avenue N.
Clearwater, FL 33760
727-573-4846
Manuel Santana, Jr.

Bohnert Sheet Metal
2225 NW 76th Street
Miami, FL 33147
305-696-6851
William H. Marvel, Jr. (Skip)

BSA Sheet Metal
2530 Ali Baba Avenue
Opa Locka, FL 33054
305-681-3771
John Rudisill

CADVANTAGE Drafting Service, Inc.
2220 1st Avenue S.
St. Petersburg, FL 33713
727-321-2072
Dan Sinclair

Cailis Mechanical Corp.
12555 Orange Drive, Suite 108
Davie, FL 33330
954-252-0263
Emanuel Cailis

Dodec Inc.
3140 W. 84th Street, Bay #2
Hialeah, FL 33018
305-826-4022
Trevor Pantry

Ferber Sheet Metal Works, Inc.
P.O. Box 26069
Jacksonville, FL 32226-6069
904-356-3042
George Ferber

Gordon Metal Fabricators
1209 Old Hopewell Road
Tampa, FL 33619
813-663-9884
Christopher Gordon

Lapin Sheet Metal Company
3825 Gardenia Avenue
Orlando, FL 32839
407-423-9897
Ronald J. Lapin

Lee's Sheet Metal Works, Inc.
P.O. Box 756
East Palatka, FL 32131
386-325-6080
James Lee

McDonald Air and Sheet Metal, Inc.
2730 Eunice Avenue
Orlando, FL 32808
407-295-0220
Ralph Carver

Magnum Sheet Metal, Inc.
7470 NW 68th Street
Miami, FL 33166
305-885-5656
William H. Murphy, Sr.

MetalFab, Inc.
28212 Rice Road
San Antonio, FL 33576
352-588-9901
Wally Ruda

National Sheet Metal Co.
8318 Atlantic Blvd.
Jacksonville, FL 32211
904-724-7476
Ed Dickey

Omega Test and Balance
126 Wisteria Avenue
Fort Pierce, FL 34982
772-216-7362
Hugh Grimes

R. Neth & Son, Inc.
360 E. Landstreet Road
Orlando, FL 32824
407-855-9096
Steven Woodley

Ray's Metal Works, Inc.
P.O. Box 700
Alachua, FL 32615
386-462-1415
Ray Burnsed, Sr.

Sheet Metal Experts, Inc.
8986 N.W. 105th Way
Medley, FL 33178
305-805-2019
William F. Medlin

South Florida Sheet Metal
5217 NE Shore Village Terrace
Stuart, FL 34996
954-647-6457
Wayne Bozer

TES of South Florida
1157 NW 159th Drive
Miami, FL 33169
305-620-8715
Jim Hightower

United Sheet Metal Company
14945 NW 25th Court
Miami, FL 33054
305-685-3526
Rich Applegate

Vickers Metal Works, Inc.
6701 Edgewater Commerce Pkwy.
Orlando, FL 32810
407-297-7546
Tim Vickers

OTHER CONTRIBUTORS TO THE FLORIDA SHEET METAL INDUSTRY

Air Duct, Inc.
Apollo Construction & Engineering
Draft-Tronics
EK Installations
FCR Mechanical Contractors
FG Metals

Florida Metal Art
1st Plumbing and Air Conditioning of Florida
Industrial Steel
JP Sheet Metal
JV Installation

Precision Mechanical, Inc.
Quality Metal Works, Inc.SDB
SDB Engineers and Constructors, Inc.
Triple M Roofing Corp.
Universal Fabrication Services
Walt Disney World Company

flsmacna@bellsouth.net

HVAC DUCT CONSTRUCTION STANDARDS - METAL AND FLEXIBLE, THIRD EDITION, NOW AVAILABLE

The hard copy electronic PDF and CD-Rom versions of this new edition are now available.

The third edition of the HVAC Duct Construction Standards - Metal and Flexible is intended primarily for commercial and institutional duct construction. The standard contains tables and details for constructing duct work for 1/2" to 10" wg positive and negative pressures.

This edition improves upon the second edition with expanded pressure class tables, separate tables for TDC/TDF construction and expanded tables for round duct construction including 6" wg positive and negative pressure and sizes up to 96".

New in this edition is an engineering and design chapter to provide additional information to design professionals, double-wall construction details, new casing con-

struction details and additional accessory items. The standard is applicable for construction using uncoated steel, galvanized and stainless steels and a limited range of aluminum ducts.

This standard has been adopted in the ICC International Mechanical Code. Includes soft metrics, 390 pages, 3rd Edition, 2005. List price: \$215.00; Discounted price \$151.00. To order go to www.smacna.org.

Florida

SMACNA Inc.

• SMACNA'S CONSTRUCTION STANDARDS

- Accepted Industry Standards for Sheet Metal Lagging.
- Architectural Sheet Metal Manual.
- Architectural Sheet Metal Manual, CADD Version 2.0
- Fire Smoke and Radiation Damper Installation Guide for HVAC Systems.
- Guide for Steel Stack Construction.
- Guidelines for Roof Mounted Outdoor Air-Conditioner Installations.
- HVAC Duct Systems Inspection Guide.
- Kitchen Ventilation Systems & Food Service Equipment Guidelines.
- Managers' Guide for Welding.
- Residential Sheet Metal Guidelines.
- Seismic Restraint Manual: Guidelines for Mechanical Systems.
- SMACNA/ASHRAE Seismic Restraint Applications CD-ROM.
- Standard Practice in Sheet Metal Work.

• SMACNA'S DUCT STANDARDS

- Duct Research Destroys Design Myths (Bubble Video).
- Duct System Calculator - Imperial.
- Ducted Electric Heat Guide for Air Handling Systems.
- HVAC Duct Design Home Study
- HVAC Systems - Duct Design.

• SMACNA'S DESIGN GUIDELINES

- Accepted Industry Practice for Industrial Duct Construction.
- Fibrous Glass Duct Construction Standards.
- HVAC Air Duct Leakage Test Manual.
- HVAC Duct Construction Standards - Metal and Flexible.
- Rectangular Industrial Duct Construction Standards.
- Residential Comfort System Installation Standards Manual.
- Round Industrial Duct Construction Standards.
- Round Industrial Duct Construction Standards (RIDCS) Software Version 2.0.

- Thermoplastic Duct (PVC) Construction Manual.

- Thermoset FRP Duct Construction Manual.

• SMACNA'S ENVIRONMENTAL PUBLICATIONS

- Building Systems Analysis and Retrofit Manual.
- Energy Systems Analysis and Management.
- HVAC Systems - Applications.
- HVAC Systems - Commissioning Manual.
- HVAC Systems - Testing, Adjusting & Balancing.
- IAQ Guidelines for Occupied Buildings Under Construction.
- Indoor Air Quality - A Systems Approach.
- TAB Procedural Guide.

Florida

SMACNA Inc.

6767 N. Wickham Road, Suite 400
Melbourne, Florida 32940



Florida SMACNA, Inc.

6767 N. Wickham Rd. #400

Melbourne, FL 32940

Tel: 321-242-8223 Fax: 321-242-8277

flsmacna@bellsouth.net

Susan E. Karr, CAE

Executive Vice President