

Florida

SMACNA Inc.

Quarterly Edition - July 2012

Volume 46

TECH/SPEC

NEWS

CUSTOM STAINLESS STEEL COUNTER TOP FOR A HOSPITAL



SHEET METAL CONTRACTOR: VICKERS METAL WORKS, INC., ORLANDO, FL

CUSTOM STAINLESS STEEL COUNTER TOP FOR A HOSPITAL



Sheet Metal Contractor: Vickers Metal Works, Inc., Orlando, FL

Vickers Metal Works, Inc. of Orlando, Florida engaged in a project to fabricate a stainless steel counter top containing two sinks for a hospital.

The counter top dimensions are 68" x 31" x 36" tall. It is fabricated of 16 ga #4 (304) stainless steel and is supported by 2" x 2" x 1/8" square brushed stainless steel legs and support frame.

The counter top includes two stainless steel sinks each of which were welded and finished into the counter top as required. The counter top was fabricated with a Marine edge.

It has a full lower shelf and adjustable height stainless steel feet. The rear deck has a four inch back splash. Each sink contains holes for faucets. The counter top has an apron on three sides to hide the sinks.

It was necessary for Vickers craftsmen to take special care to insure that there were no sharp edges or corners. All seams were welded and finished where required.

The project took the sheet metal workers at Vickers Metal Works approximately 70 man hours to fabricate.

ROOFING REPAIR AND DOOR REPLACEMENT FOR ORLANDO UTILITIES COMMISSION PCB BUILDING, ST. CLOUD, FL



Sheet Metal Contractor: Neth and Son, Inc., Orlando, FL

The scope of the project was to remove the existing roofing on the Orlando Utilities Commission PCB Building and replace it with new wood and metal panels. Additionally, Neth and Son fabricated and installed a new door on the building.

The craftsmen at Neth and Son removed the failing roofing on the building. They further removed

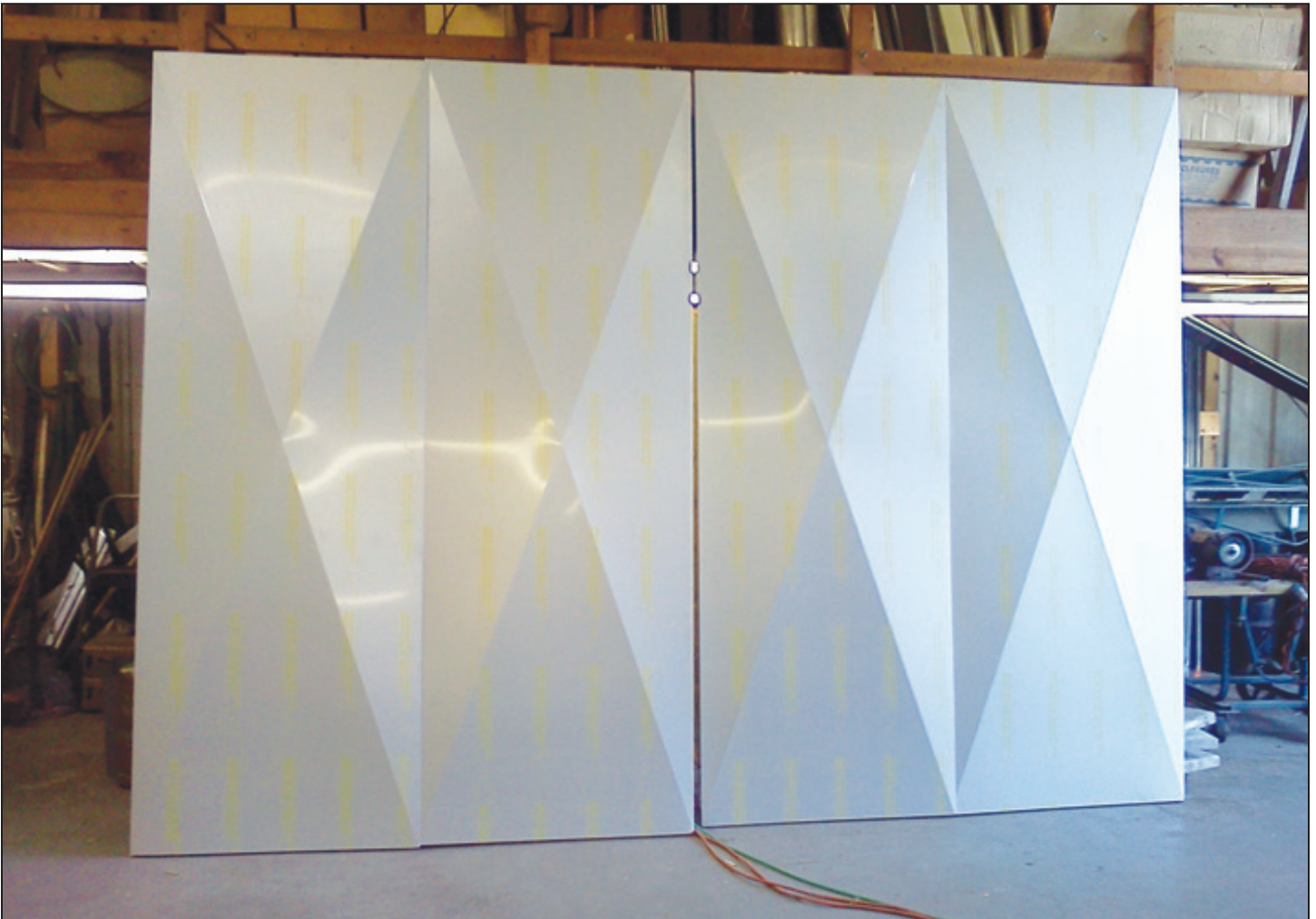
stringers that were undersized and unable to support workers' weight.

Neth installed a new fire-rated wood nailer 2" x 4"s at 24" on center. Then, they installed a new 26 ga pbr panel with metal fascia and drip molding all around. At the edge of the roof, where water damage had started to compromise the roof truss, they sandwiched existing 2" x

10"s with new pressure treated 2" x 10"s on each side.

A door was fabricated and installed in the opening at the end of the building.

**ROOFING REPAIR AND DOOR REPLACEMENT FOR ORLANDO UTILITIES COMMISSION
PCB BUILDING, ST. CLOUD, FL**



Neth superintendent, Bobby Joe Montgomery, was in charge of the project and welded the 063 aluminum framing to accept the 040 anodized aluminum skin.

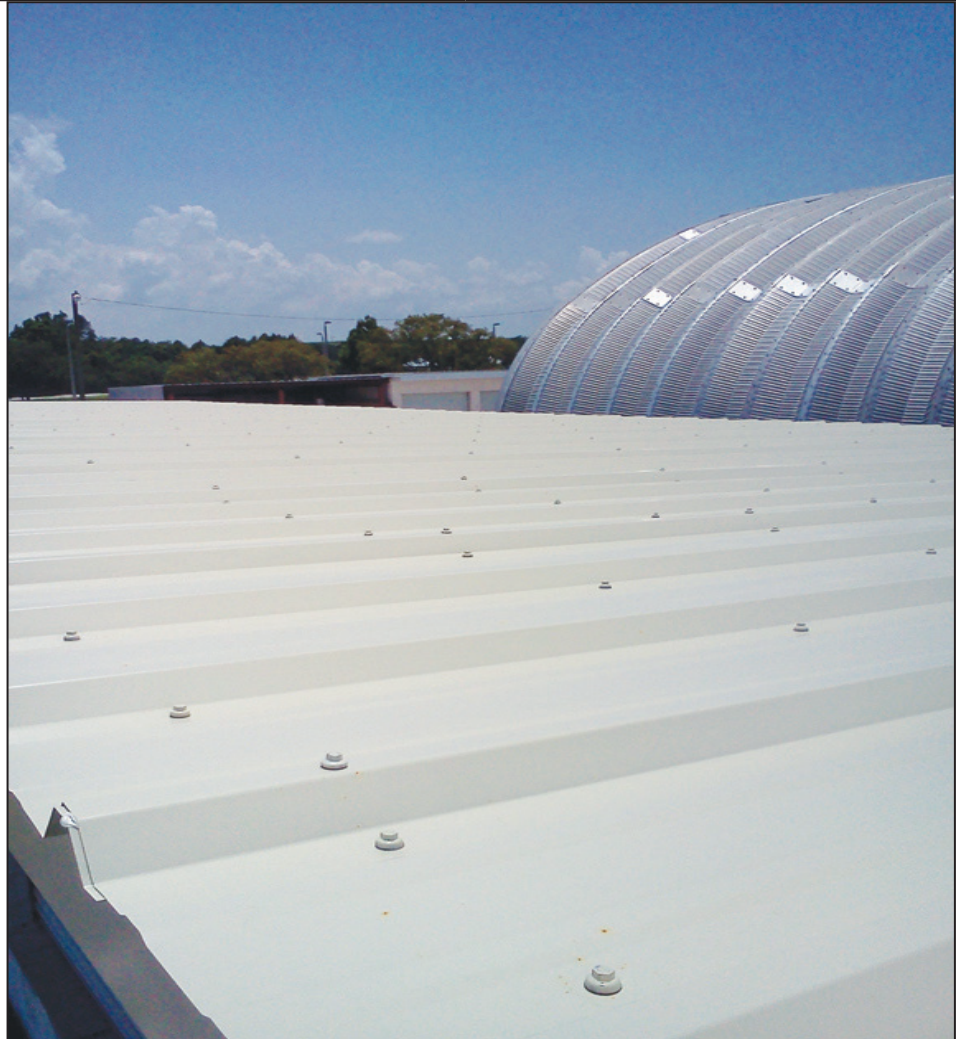
Foreman, William Finney, assisted in the field demolition, shop fabrication and installation. Auther Glover assisted with the woodwork installation. The estimator and project manager was Stephen L. Woodley.

**ROOFING REPAIR AND DOOR REPLACEMENT FOR ORLANDO UTILITIES COMMISSION
PCB BUILDING, ST. CLOUD, FL**



For more than 30 years the craftsmen at Neth and Son, Inc. have been installing roofing and fabricating and installing sheet metal roofs, scuppers, gutters, down spouts, coping edging, pitch pockets and other roof-related items.

Neth and Son, Inc. is proud to be a certified installer of all major roofing systems available on the market.



FLORIDA SMACNA, INC. MEMBER FIRMS

In the sheet metal and air conditioning business, nobody knows excellence quite the way SMACNA Contractors do. After all, they wrote the book on it. Why take a chance on doing business with anyone who offers less.

All Southern Fabricators, Inc.

5010 126th Avenue N.
Clearwater, FL 33760
727-573-4846
Manuel Santana, Jr.

Lapin Sheet Metal Company

3825 Gardenia Avenue
Orlando, FL 32839
407-423-9897
Ronald J. Lapin

R. Neth & Son, Inc.

360 E. Landstreet Road
Orlando, FL 32824
407-855-9096
Brad Supples

Bohnert Sheet Metal

2225 NW 76th Street
Miami, FL 33147
305-696-6851
William H. Marvel, Jr. (Skip)

McDonald Air and Sheet Metal, Inc.

2730 Eunice Avenue
Orlando, FL 32808
407-295-0220
Ralph Carver

Ray's Metal Works, Inc.

P.O. Box 700
Alachua, FL 32616
386-462-1415
Ray Burnsed, Sr.

BSA Sheet Metal

2530 Ali Baba Avenue
Opa Locka, FL 33054
305-681-3771
John Rudisill

Magnum Sheet Metal, Inc.

7470 NW 68th Street
Miami, FL 33166
305-885-5656
William H. Murphy, Sr.

Sheet Metal Experts, Inc.

8986 N.W. 105th Way
Medley, FL 33178
305-805-2019
William F. Medlin

CADVANTAGE Drafting Service, Inc.

2220 1st Avenue S.
St. Petersburg, FL 33712
727-321-2072
Dan Sinclair

MetalFab, Inc.

P. O. Box 1184
San Antonio, FL 33576-1184
352-588-9901
Wally Ruda

South Florida Sheet Metal

5264 NW 163rd St.
Miami, FL 33014
305-430-0075
Harold Woods

Dodec Inc.

3140 W. 84th Street, Bay #2
Hialeah, FL 33018
305-826-4022
Trevor Pantry

Moffitt Mechanical, LLC

1351 13th Avenue South, Suite 130
Jacksonville Beach, FL 32250
904-241-9944
John Moffitt

United Sheet Metal Company/ Applegate

1141 NW 31st Avenue
Pompano Beach, FL 33069
954-773-2910
Rich Applegate

Ferber Sheet Metal Works, Inc.

4121 Evergreen Avenue
Jacksonville, FL 32206
904-356-3042
George Ferber

Omega Test and Balance

126 Wisteria Avenue
Fort Pierce, FL 34982
772-216-7632
Hugh Grimes

Vickers Metal Works, Inc.

6701 Edgewater Commerce Pkwy.
Orlando, FL 32810
407-297-7546
Tim Vickers

OTHER CONTRIBUTORS TO THE FLORIDA SHEET METAL INDUSTRY

Colbert Air Conditioning
Crown Corr Erection
D&J Sheet Metal
Hanan Mechanical
FCR Mechanical Contractors

Irvine Mechanical
MFH Sheet Metal Fabricators, Corp.
SDB Engineers and Constructors, Inc.
Southeast Duct Specialists
Quality Metal Works, Inc.

System Tech Services
Tabco, LLC
TankServe, Inc.
Triple M Roofing Corp.
Veritab Environmental

SMACNA'S NEW "ARCHITECTURAL SHEET METAL MANUAL" IS NEWLY REVISED AND IS AVAILABLE FOR PURCHASE IN THE SMACNA BOOKSTORE.

The 542 page, updated, seventh edition includes new commentary and drawings throughout. New chapters and appendices cover: wall and roof penetrations, interior architectural sheet metal elements, architectural fascia and coping wind-test reports, and general guidelines about joint sealants for architects.

Recognizing that roof and wall penetrations are problematic sources for leaks, a separate chapter is dedicated to penetrations. To assure penetrations are treated with careful attention all existing drawings from the sixth edition were refined and are now located in the penetration chapter. New drawings and clarifying commentary result in comprehensive coverage of the topic.

Since wind pull-off resistance is incorporated in the International Building Code, the SMACNA Testing and Research Institute (STRI) conducted wind-uplift testing on custom-fabricated fascia and coping constructed in accordance with the "Architectural Sheet Metal Manual." The results of

the final test reports are now available in the seventh edition. They demonstrate that fascia and coping constructed according to the SMACNA "Architectural Sheet Metal Manual" resist very high pull-off forces and will meet building code in any locale.

In addition, the Adhesive and Sealant Council and Sealants, Waterproofing and Restoration Institute has generously provided and permitted SMACNA to include the organization's brief reference guide to assist the architectural community in understanding the basics of designing and specifying joint sealants in building construction applications.

Beyond an overall review and revision of all drawings and commentary in the book, other substantive changes include:

Copings. Both drawings and commentary are enhanced to better guide designers in stopping water intrusion from the vulnerable wall top.

Snow Guards. Assists designers in better understanding the risks and options associated with managing snow accumulations on roofs.

Zinc. Is a new addition to the list of metals and provides additional guidance to this metal that has recently grown in popularity in the U.S.

Underlayments. More details are included to insure designers recognize the importance of this "unseen" architectural element in the overall building envelope.

Flashing. Details are revisited in all drawings and commentary with an emphasis on making certain that the best flashing methods are included. Important details such as end dams are clearly noted.

Non-member prices for the hard copy are \$242 discounted and \$346 list price; CD-ROM: \$291 discounted price, \$416 list price; CD-ROM/Hard Copy Combo: \$401 discounted, \$573 list.

Florida

SMACNA

Inc.

SMACNA'S CONSTRUCTION STANDARDS

- Accepted Industry Practices for Sheet Metal Lagging.
- Architectural Sheet Metal Inspection Guide.
- Architectural Sheet Metal Manual, 6th edition 2003
- Fire Smoke and Radiation Damper Installation Guide for HVAC Systems.
- Guide for Steel Stack Construction.
- Guidelines for Roof Mounted Outdoor Air Conditioner Installations.
- HVAC Duct Systems Inspection Guide.
- Kitchen Ventilation Systems & Food Service Equipment Fabrication & Installation Guidelines.
- Residential Sheet Metal Guidelines.
- Seismic Restraint Manual: Guidelines for Mechanical Systems.
- Sheet Metal Welding Guide.
- Standard Practice in Sheet Metal Work.

SMACNA'S DESIGN GUIDES

- Duct System Calculator - Imperial + Metric
- Ducted Electric Heat Guide for Air Handling Systems.
- Guidelines for Change Orders
- HVAC Systems - Duct Designs.

SMACNA'S DUCT STANDARDS

- Accepted Industry Practice for Industrial Duct Construction.
- Fibrous Glass Duct Construction Standards.
- HVAC Air Duct Leakage Test Manual.
- HVAC Duct Construction Standards - Metal and Flexible.
- Rectangular Industrial Duct Construction Standards.
- Residential Comfort System Installation Standards Manual.
- Round Industrial Duct Construction Standards.

- Round Industrial Duct Construction Standards (RIDCS) Software Version 2.0.
- Thermoplastic Duct (PVC) Construction Manual.
- Thermoset FRP Duct Construction Manual.

SMACNA'S ENVIRONMENTAL PUBLICATIONS

- Building Systems Analysis and Retrofit Manual.
- Energy Systems Analysis and Management.
- HVAC Sound & Vibration Manual
- HVAC Systems - Applications.
- HVAC Systems - Commissioning Manual.
- HVAC Systems - Testing, Adjusting & Balancing.
- IAQ Guidelines for Occupied Buildings Under Construction.
- Indoor Air Quality - A Systems Approach.
- TAB Procedural Guide.

Florida

SMACNA Inc.

6767 N. Wickham Road, Suite 400
Melbourne, Florida 32940

RETURN SERVICE REQUESTED



Florida SMACNA, Inc.

6767 N. Wickham Rd. #400

Melbourne, FL 32940

Tel: 321-242-8223 Fax: 321-242-8277

skarr@flsmacna.org

Susan E. Karr

Executive Vice President

<http://www.flsmacna.org>